



Safety is for life.™

PRODUCT INFORMATION



Explosion Venting EGV HYP

FOR HYGIENIC APPLICATIONS WITH LOW OVERPRESSURE OR VACUUM

Applications

EGV HYP was specifically developed for demanding hygienic applications in the food and pharmaceutical industries. It is frequently used in critical plants to protect spray dryers, filters or fluid bed dryers. This has been confirmed by the **EHEDG Cleanability Test**, among others.

Special feature: The patented, full surface, tapered sealing system fits flush with the interior of the explosion vent and **prevents cross contamination**. The explosion vent can also be pre-bent to fit cylindrical enclosures.

Mechanism

When pressure rises, the explosion vent opens at the defined breaking points and releases pressure out of the vessel into the surrounding area.

Your advantages

- Hygienic design ensures **high product quality**.
- **Protects from cross contamination** upon change of product.
- Allows **CIP cleaning**.
- **Longer lifetime** of explosion vent under extreme temperatures and strain from pressure alternations – thanks to integrated bionic structure.
- **Reduced noise emissions**.



Technical data*

Standard burst pressure P_{stat}	0.1 bar
Max. permitted operating pressure	50% of P_{stat}
Temperature	-40 to +356 °F (-40 to +180 °C)
Material	Stainless steel
Gasket material	Full-scale silicon seal (FDA-approved, hygienic performance)
Tolerance	±20% at standard burst pressure
Process	Non-pulsating
Recommended torque for M10 screws	15 – 20 Nm

*Our specialists would be pleased to assist you in finding a solution that matches your specific operating conditions.



ATEX
EC type examination
certificate no.
FSA 04 ATEX 1538 X

SIL equivalent SIL 4

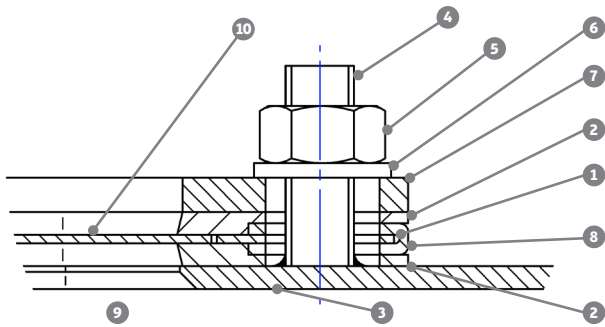
You can find detailed information and contact details for enquiries relating to EGV HYP explosion vents at www.rembe.us. Or just give us a call at: T +1 704 716 7022, info@rembe.us.





Safety is for life.™

PRODUCT INFORMATION



- 1 Explosion vent (burst element, integrated gasket and integrated frame)
- 2 Integrated silicon gasket
- 3 Vessel wall (opening dimensions +0/-2 mm)
- 4 Threaded bolt
- 5 Nut
- 6 Washer
- 7 Counter frame
- 8 Integrated frame
- 9 Opening
- 10 Burst element

Installation with welded threaded bolts.



The specially developed sealing system prevents product deposits.



The outside is insulated to prevent condensation-related product built-up.

Standard dimensions

Max. size of wall opening – nominal vent dimensions		Effective venting area	
[inch]	[mm]	[sq in]	[cm ²]
12.0 × 24.0	305 × 610	288.3	1860
19.3 × 23.2	490 × 590	448.0	2890
23.1 × 36.2	586 × 920	837.0	5400
24.0 × 44.0	610 × 1118	1054.0	6800
36.2 × 36.2	920 × 920	1317.5	8500
36.0 × 44.0	915 × 1118	1550.0	10230
39.4 × 39.4	1000 × 1000	1585.7	10000
40.2 × 40.2	1020 × 1020	1612.0	10400

Other dimensions available on request.

Consulting. Engineering. Products. Service.

REMBE® Inc.

9567 Yarborough Road | Fort Mill, SC 29707, USA | T +1 704 716 7022 | F +1 704 716 7025
info@rembe.us | www.rembe.us